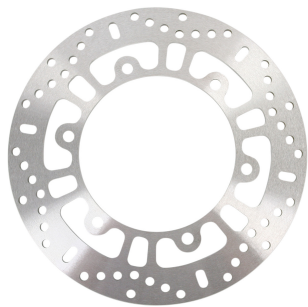


Tarcza hamulcowa EBC MD1008 HONDA NT 700 V Deauvil**Cena :****1023,00 zł**Nr katalogowy : **MD1008**Producent : **EBC**Stan magazynowy : **bardzo wysoki**

Średnia ocena :

Tarcza hamulcowa EBC MD1008 HONDA NT 700 V Deauville

Dane techniczne:

Średnica zewn. : 296 mm

Średnica wewn. : 144.2 mm

Średnica koła śrub mocujących : 166 mm

Liczba śrub mocujących : 6

Średnica otworu śruby : 10.5 mm

Grubość : 5 mm

Typ : Stała

Producent: EBC

Firma EBC to jeden z największych europejskich producentów okładzin i tarcz hamulcowych.

Tarcze prosimy wymieniać parami, bowiem mogą one nieznacznie odbiegać wyglądem od oryginalnych.

Tarcze prosimy wymieniać w wyspecjalizowanych warsztatach motocyklowych!!!

Model Displacement Year Country Engine Info Position

HONDA CB 500 499 1997 EUROPE 25 KW(34 PS); 37 KW(50 PS); 43 KW(58 PS) FRONT/RIGHT
 HONDA CB 500 499 1998 EUROPE 24 KW(33 PS); 36 KW(49 PS); 42 KW(57 PS) FRONT/RIGHT
 HONDA CB 500 499 1999 EUROPE 24 KW(33 PS); 36 KW(49 PS); 42 KW(57 PS) FRONT/RIGHT
 HONDA CB 500 499 2000 EUROPE 24 KW(33 PS); 36 KW(49 PS); 42 KW(57 PS) FRONT/RIGHT
 HONDA CB 500 499 2001 EUROPE 24 KW(33 PS); 36 KW(49 PS); 42 KW(57 PS) FRONT/RIGHT
 HONDA CB 500 499 2002 EUROPE 24 KW(33 PS); 36 KW(49 PS); 42 KW(57 PS) FRONT/RIGHT
 HONDA CB 500 499 2003 EUROPE 24 KW(33 PS); 36 KW(49 PS); 42 KW(57 PS) FRONT/RIGHT
 HONDA CB 500 Cup 499 1999 EUROPE 24 KW(33 PS); 36 KW(49 PS); 42 KW(57 PS) FRONT/RIGHT
 HONDA CBF 500 499 2004 EUROPE 25 KW(34 PS); 42 KW(57 PS) FRONT/LEFT
 HONDA CBF 500 ABS 499 2004 EUROPE 25 KW(34 PS); 42 KW(57 PS) FRONT/LEFT
 HONDA CBF 250 250 2004 EUROPE 16 KW(22 PS) FRONT/LEFT
 HONDA CBF 500 499 2005 EUROPE 25 KW(34 PS); 42 KW(57 PS) FRONT/LEFT
 HONDA CBF 500 ABS 499 2005 EUROPE 25 KW(34 PS); 42 KW(57 PS) FRONT/LEFT
 HONDA CBF 250 250 2005 EUROPE 16 KW(22 PS) FRONT/LEFT
 HONDA CBF 500 499 2006 EUROPE 25 KW(34 PS); 42 KW(57 PS) FRONT/LEFT
 HONDA CBF 500 ABS 499 2006 EUROPE 25 KW(34 PS); 42 KW(57 PS) FRONT/LEFT
 HONDA CBF 1000 998 2006 EUROPE 72 KW(98 PS); 75 KW(102 PS) FRONT/LEFT
 HONDA CBF 1000 ABS 998 2006 EUROPE 72 KW(98 PS); 75 KW(102 PS) FRONT/LEFT
 HONDA CBF 250 250 2006 EUROPE 16 KW(22 PS) FRONT/LEFT
 HONDA CBR 1000 F 998 1987 ALL 74 KW(100 PS) FRONT/LEFT
 HONDA CBR 1000 F 998 1988 ALL 74 KW(100 PS) FRONT/LEFT
 HONDA CBR 1000 F 998 1989 ALL 74 KW(100 PS) FRONT/LEFT
 HONDA CBR 1000 F 998 1990 ALL 74 KW(100 PS) FRONT/LEFT
 HONDA CBR 1000 F 998 1991 ALL 74 KW(100 PS) FRONT/LEFT
 HONDA CBR 1000 F 998 1992 ALL 74 KW(100 PS) FRONT/LEFT
 HONDA CBR 1000 F 998 1993 ALL 72 KW(98 PS) FRONT/LEFT
 HONDA CBR 1000 F 998 1994 ALL 72 KW(98 PS) FRONT/LEFT
 HONDA CBR 1000 F 998 1995 ALL 72 KW(98 PS) FRONT/LEFT
 HONDA CBR 1000 F 998 1996 ALL 72 KW(98 PS) FRONT/LEFT
 HONDA CBR 1000 F 998 1997 ALL 72 KW(98 PS) FRONT/LEFT
 HONDA CBR 1000 F 998 1998 ALL 72 KW(98 PS) FRONT/LEFT
 HONDA CBR 1000 F 998 1999 ALL 72 KW(98 PS) FRONT/LEFT
 HONDA CBR 1000 F Hurricane 998 1987 AMERICA FRONT/LEFT
 HONDA CBR 1000 F Hurricane 998 1988 AMERICA FRONT/LEFT
 HONDA CBR 1000 F Hurricane 998 1990 AMERICA FRONT/LEFT
 HONDA CBR 1000 F Hurricane 998 1991 AMERICA FRONT/LEFT
 HONDA CBR 1000 F Hurricane 998 1992 AMERICA FRONT/LEFT
 HONDA CBR 1000 F Hurricane 998 1993 AMERICA FRONT/LEFT
 HONDA CBR 1000 F Hurricane 998 1994 AMERICA FRONT/LEFT
 HONDA CBR 1000 F Hurricane 998 1995 AMERICA FRONT/LEFT

HONDA CBR 1000 F Hurricane 998 1996 AMERICA FRONT/LEFT
HONDA CB 750 F2 Seven Fifty 747 1992 EUROPE 20 KW(27 PS); 25 KW(34 PS); 54 KW(73 PS) FRONT/LEFT
HONDA CB 750 F2 Seven Fifty 747 1993 EUROPE 20 KW(27 PS); 25 KW(34 PS); 54 KW(73 PS) FRONT/LEFT
HONDA CB 750 F2 Seven Fifty 747 1994 EUROPE 20 KW(27 PS); 25 KW(34 PS); 55 KW(75 PS) FRONT/LEFT
HONDA CB 750 F2 Seven Fifty 747 1995 EUROPE 20 KW(27 PS); 25 KW(34 PS); 56 KW(76 PS) FRONT/LEFT
HONDA CB 750 F2 Seven Fifty 747 1996 EUROPE 20 KW(27 PS); 25 KW(34 PS); 57 KW(77 PS) FRONT/LEFT
HONDA CB 750 F2 Seven Fifty 747 1997 EUROPE 20 KW(27 PS); 25 KW(34 PS); 57 KW(77 PS) FRONT/LEFT
HONDA CB 750 F2 Seven Fifty 747 1998 EUROPE 20 KW(27 PS); 25 KW(34 PS); 58 KW(79 PS) FRONT/LEFT
HONDA CB 750 F2 Seven Fifty 747 1999 EUROPE 20 KW(27 PS); 25 KW(34 PS); 59 KW(80 PS) FRONT/LEFT
HONDA CB 750 F2 Seven Fifty 747 2000 EUROPE 20 KW(27 PS); 25 KW(34 PS); 60 KW(82 PS) FRONT/LEFT
HONDA CB 750 F2 Seven Fifty 747 2001 EUROPE 20 KW(27 PS); 25 KW(34 PS); 60 KW(82 PS) FRONT/LEFT
HONDA CB 750 F2 Seven Fifty 747 2002 EUROPE 20 KW(27 PS); 25 KW(34 PS); 61 KW(83 PS) FRONT/LEFT
HONDA CBF 600 N 599 2004 EUROPE 25 KW(34 PS); 56 KW(76 PS) FRONT/LEFT
HONDA CBF 600 N ABS 599 2004 EUROPE 25 KW(34 PS); 56 KW(76 PS) Front Left/Front Right
HONDA CBF 500 N 499 2004 EUROPE 25 KW(34 PS); 42 KW(57 PS) FRONT/LEFT
HONDA CBF 500 N ABS 499 2004 EUROPE 25 KW(34 PS); 42 KW(57 PS) FRONT/LEFT
HONDA CBF 600 N 599 2005 EUROPE 25 KW(34 PS); 57 KW(78 PS) FRONT/LEFT
HONDA CBF 600 N ABS 599 2005 EUROPE 25 KW(34 PS); 57 KW(78 PS) Front Left/Front Right
HONDA CBF 500 N 499 2005 EUROPE 25 KW(34 PS); 42 KW(57 PS) FRONT/LEFT
HONDA CBF 500 N ABS 499 2005 EUROPE 25 KW(34 PS); 42 KW(57 PS) FRONT/LEFT
HONDA CBF 600 N 599 2006 EUROPE 25 KW(34 PS); 57 KW(78 PS) FRONT/LEFT
HONDA CBF 600 N ABS 599 2006 EUROPE 25 KW(34 PS); 57 KW(78 PS) Front Left/Front Right
HONDA CBF 500 N 499 2006 EUROPE 25 KW(34 PS); 42 KW(57 PS) FRONT/LEFT
HONDA CBF 500 N ABS 499 2006 EUROPE 25 KW(34 PS); 42 KW(57 PS) FRONT/LEFT
HONDA CB 500 S 499 1998 EUROPE 24 KW(33 PS); 36 KW(49 PS); 42 KW(57 PS) FRONT/RIGHT
HONDA CB 500 S 499 1999 EUROPE 24 KW(33 PS); 36 KW(49 PS); 42 KW(57 PS) FRONT/RIGHT
HONDA CB 500 S 499 2000 EUROPE 24 KW(33 PS); 36 KW(49 PS); 42 KW(57 PS) FRONT/RIGHT
HONDA CB 500 S 499 2001 EUROPE 24 KW(33 PS); 36 KW(49 PS); 42 KW(57 PS) FRONT/RIGHT
HONDA CB 500 S 499 2002 EUROPE 24 KW(33 PS); 36 KW(49 PS); 42 KW(57 PS) FRONT/RIGHT
HONDA CB 500 S 499 2003 EUROPE 24 KW(33 PS); 36 KW(49 PS); 42 KW(57 PS) FRONT/RIGHT
HONDA CBF 600 S 599 2004 EUROPE 25 KW(34 PS); 56 KW(76 PS) Front Left/Front Right
HONDA CBF 600 S ABS 599 2004 EUROPE 25 KW(34 PS); 56 KW(76 PS) Front Left/Front Right
HONDA CBF 600 S ABS 599 2005 EUROPE 25 KW(34 PS); 57 KW(78 PS) Front Left/Front Right
HONDA CBF 600 S 599 2005 EUROPE 25 KW(34 PS); 57 KW(78 PS) Front Left/Front Right
HONDA CBF 600 S 599 2006 EUROPE 25 KW(34 PS); 57 KW(78 PS) FRONT/LEFT
HONDA CBF 600 S ABS 599 2006 EUROPE 25 KW(34 PS); 57 KW(78 PS) Front Left/Front Right
HONDA CBF 600 S ABS 599 2007 EUROPE 25 KW(34 PS); 57 KW(78 PS) Front Left/Front Right
HONDA CBF 600 S ABS 599 2008 EUROPE 25 KW(34 PS); 57 KW(78 PS) Front Left/Front Right
HONDA ST 1100 ABS Pan European 1085 1996 ALL 72 KW(98 PS) FRONT/LEFT
HONDA ST 1100 ABS Pan European 1085 1997 ALL 72 KW(98 PS) FRONT/LEFT
HONDA ST 1100 ABS Pan European 1085 1998 ALL 72 KW(98 PS) FRONT/LEFT
HONDA ST 1100 ABS Pan European 1085 1999 EUROPE 72 KW(98 PS) FRONT/LEFT
HONDA ST 1100 ABS Pan European 1085 2000 EUROPE 72 KW(98 PS) FRONT/LEFT
HONDA ST 1100 ABS Pan European 1085 2001 EUROPE 72 KW(98 PS) FRONT/LEFT
HONDA NT 650 V Deauville 647 1998 EUROPE 25 KW(34 PS); 41 KW(56 PS) FRONT/LEFT
HONDA NT 650 V Deauville 647 1999 EUROPE 25 KW(34 PS); 41 KW(56 PS) FRONT/LEFT
HONDA NT 650 V Deauville 647 2000 EUROPE 25 KW(34 PS); 41 KW(56 PS) FRONT/LEFT
HONDA NT 650 V Deauville 647 2001 EUROPE 25 KW(34 PS); 41 KW(56 PS) FRONT/LEFT
HONDA NT 650 V Deauville 647 2002 EUROPE 25 KW(34 PS); 41 KW(56 PS) FRONT/LEFT
HONDA NT 650 V Deauville 647 2003 EUROPE 25 KW(34 PS); 41 KW(56 PS) FRONT/LEFT
HONDA NT 650 V Deauville 647 2004 EUROPE 25 KW(34 PS); 41 KW(56 PS) FRONT/LEFT
HONDA NT 650 V Deauville 647 2005 EUROPE 25 KW(34 PS); 41 KW(56 PS) FRONT/LEFT
HONDA NT 700 V Deauville 680 2006 EUROPE 48 KW(65 PS) FRONT
HONDA NT 700 V ABS Deauville 680 2006 EUROPE 48 KW(65 PS) FRONT
HONDA NT 700 V Deauville 680 2007 EUROPE 48 KW(65 PS) FRONT
HONDA NT 700 V ABS Deauville 680 2007 EUROPE 48 KW(65 PS) FRONT
HONDA NT 700 V Deauville 680 2008 EUROPE 48 KW(65 PS) FRONT
HONDA NT 700 V ABS Deauville 680 2008 EUROPE 48 KW(65 PS) FRONT
HONDA NT 700 V Deauville 680 2009 EUROPE 48 KW(65 PS) FRONT
HONDA NT 700 V ABS Deauville 680 2009 EUROPE 48 KW(65 PS) FRONT
HONDA NT 700 V ABS Deauville 680 2010 ALL 48 KW(65 PS) FRONT
HONDA NT 700 V Deauville 680 2010 ALL 48 KW(65 PS) FRONT
HONDA NT 700 V ABS Deauville 680 2011 ALL 48 KW(65 PS) FRONT
HONDA NT 700 V Deauville 680 2011 ALL 48 KW(65 PS) FRONT
HONDA NT 700 V Deauville 680 2012 EUROPE 48 KW(65 PS) FRONT
HONDA NT 700 V ABS Deauville 680 2012 EUROPE 48 KW(65 PS) FRONT
HONDA NT 700 V ABS Deauville 680 2013 EUROPE 48 KW(65 PS) FRONT
HONDA NT 700 V Deauville 680 2013 EUROPE 48 KW(65 PS) FRONT
HONDA VFR 750 F 748 1988 ALL 74 KW(100 PS) FRONT/LEFT
HONDA VFR 750 F 748 1989 ALL 74 KW(100 PS) FRONT/LEFT
HONDA VFR 750 F 748 1990 ALL 74 KW(100 PS) FRONT/LEFT
HONDA VFR 750 F 748 1991 ALL 74 KW(100 PS) FRONT/LEFT
HONDA VFR 750 F 748 1992 ALL 74 KW(100 PS) FRONT/LEFT

HONDA VFR 750 F 748 1993 ALL 72 KW(98 PS) FRONT/LEFT

Dostępne opcje Tarcza hamulcowa EBC MD1008 HONDA NT 700 V Deauvil

» **Wybierz opcje z listy:** BRAKE ROTOR FIX RND FR MD1008 - niedostępny.

Watermark