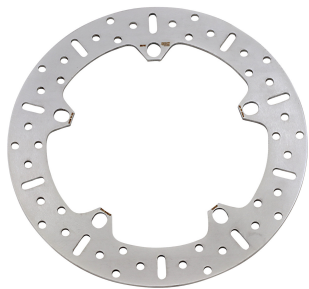


**Tarcza hamulcowa EBC MD652 BMW R 1100 RS 850 RT K1****Cena :****816,00 zł**Nr katalogowy : **MD652**Producent : **EBC**Stan magazynowy : **bardzo wysoki**

Średnia ocena :

Tarcza hamulcowa EBC MD652 BMW R 1100 RS 850 RT K1200

Dane techniczne:

Średnica zewn. : 305 mm

Średnica wewn. : 180.5 mm

Średnica koła śrub mocujących : 101.7 mm

Liczba śrub mocujących : 5

Średnica otworu śruby : 14x16.5 mm

Grubość : 5.3 mm

Typ : Stała

Producent : EBC

Firma EBC to jeden z największych europejskich producentów okładzin i tarcz hamulcowych.

Tarcze prosimy wymieniać parami, bowiem mogą one nieznacznie odbiegać wyglądem od oryginalnych.

Tarcze prosimy wymieniać w wyspecjalizowanych warsztatach motocyklowych!!!

Model Displacement Year Country Engine Info Position  
 BMW K 1200 LT ABS 1171 1999 ALL 72 KW(98 PS) Front  
 BMW K 1200 LT ABS 1171 2000 ALL 72 KW(98 PS) Front  
 BMW R 1100 GS 1085 1993 ALL 59 KW(80 PS) Front  
 BMW R 1100 GS 1085 1994 ALL 59 KW(80 PS) Front  
 BMW R 850 R 848 1995 ALL 25 KW(34 PS); 51 KW(70 PS) Front  
 BMW R 1100 GS 1085 1995 ALL 59 KW(80 PS) Front  
 BMW R 1100 R 1085 1995 ALL 59 KW(80 PS) Front  
 BMW R 850 R 848 1996 ALL 25 KW(34 PS); 51 KW(70 PS) Front  
 BMW R 1100 GS 1085 1996 ALL 59 KW(80 PS) Front  
 BMW R 1100 R 1085 1996 ALL 59 KW(80 PS) Front  
 BMW R 1100 GS 1085 1997 ALL 59 KW(80 PS) Front  
 BMW R 1100 GS 1085 1998 ALL 59 KW(80 PS) Front  
 BMW R 1100 GS ABS 1085 1998 ALL 59 KW(80 PS) Front  
 BMW R 850 GS 848 1998 EUROPE 25 KW(34 PS); 51 KW(69 PS) Front  
 BMW R 850 GS ABS 848 1998 EUROPE 25 KW(34 PS); 51 KW(69 PS) Front  
 BMW R 850 GS 848 1998 EUROPE 25 KW(34 PS); 51 KW(69 PS) Front  
 BMW R 850 GS ABS 848 1998 EUROPE 25 KW(34 PS); 51 KW(69 PS) Front  
 BMW R 1100 GS 1085 1999 ALL 59 KW(80 PS) Front  
 BMW R 1150 GS 1130 1999 ALL 63 KW(86 PS) Front  
 BMW R 850 GS 848 1999 EUROPE 25 KW(34 PS); 51 KW(69 PS) Front  
 BMW R 850 GS ABS 848 1999 EUROPE 25 KW(34 PS); 51 KW(69 PS) Front  
 BMW R 850 GS 848 1999 EUROPE 25 KW(34 PS); 51 KW(69 PS) Front  
 BMW R 850 GS ABS 848 1999 EUROPE 25 KW(34 PS); 51 KW(69 PS) Front  
 BMW R 1150 GS 1130 2000 ALL 63 KW(86 PS) Front  
 BMW R 850 GS 848 2000 EUROPE 25 KW(34 PS); 51 KW(69 PS) Front  
 BMW R 850 GS ABS 848 2000 EUROPE 25 KW(34 PS); 51 KW(69 PS) Front  
 BMW R 1150 GS ABS 1130 2001 ALL 63 KW(86 PS) Front Left/Front Right  
 BMW R 1150 GS 1130 2001 ALL 63 KW(86 PS) Front Left/Front Right  
 BMW R 1150 GS 1130 2002 ALL 63 KW(86 PS) Front Left/Front Right  
 BMW R 1150 GS ABS 1130 2002 ALL 63 KW(86 PS) Front Left/Front Right  
 BMW R 1150 GS 1130 2003 ALL 63 KW(86 PS) Front Left/Front Right  
 BMW R 1150 GS ABS 1130 2003 ALL 63 KW(86 PS) Front Left/Front Right  
 BMW R 1200 CL 1170 2003 ALL 45 KW(61 PS) Front  
 BMW R 1200 CL ABS 1170 2003 ALL 45 KW(61 PS) Front  
 BMW R 1200 CL 1170 2004 ALL 45 KW(61 PS) Front  
 BMW R 1200 CL ABS 1170 2004 ALL 45 KW(61 PS) Front  
 BMW R 1150 GS Adventure 1130 2002 ALL 63 KW(86 PS) Front Left/Front Right  
 BMW R 1150 GS ABS Adventure 1130 2002 ALL 63 KW(86 PS) Front Left/Front Right  
 BMW R 1150 GS Adventure 1130 2003 ALL 63 KW(86 PS) Front Left/Front Right  
 BMW R 1150 GS ABS Adventure 1130 2003 ALL 63 KW(86 PS) Front Left/Front Right

BMW R 1150 GS ABS Adventure 1130 2004 ALL 63 KW(86 PS) Front  
BMW R 1150 GS Adventure 1130 2004 ALL 63 KW(86 PS) FRONT/LEFT  
BMW R 1150 GS ABS Adventure 1130 2005 ALL 63 KW(86 PS) Front  
BMW R 1150 GS Adventure 1130 2005 ALL 63 KW(86 PS) FRONT/LEFT  
BMW R 1200 C Avantgarde 1170 1999 ALL 45 KW(61 PS) Front  
BMW R 1200 C ABS Avantgarde 1170 1999 ALL 45 KW(61 PS) Front  
BMW R 850 C Avantgarde 848 1999 EUROPE 25 KW(34 PS); 37 KW(50 PS) FRONT/LEFT  
BMW R 850 C ABS Avantgarde 848 1999 EUROPE 25 KW(34 PS); 37 KW(50 PS) Front  
BMW R 1200 C Avantgarde 1170 2000 ALL 45 KW(61 PS) Front  
BMW R 1200 C ABS Avantgarde 1170 2000 ALL 45 KW(61 PS) Front  
BMW R 850 C Avantgarde 848 2000 EUROPE 25 KW(34 PS); 37 KW(50 PS) FRONT/LEFT  
BMW R 850 C ABS Avantgarde 848 2000 EUROPE 25 KW(34 PS); 37 KW(50 PS) Front  
BMW R 1200 C Avantgarde 1170 2001 ALL 45 KW(61 PS) Front  
BMW R 1200 C ABS Avantgarde 1170 2001 ALL 45 KW(61 PS) Front  
BMW R 1200 C Avantgarde 1170 2002 ALL 45 KW(61 PS) Front  
BMW R 1200 C ABS Avantgarde 1170 2002 ALL 45 KW(61 PS) Front  
BMW R 1200 C Classic 1170 1997 ALL 45 KW(61 PS) Front  
BMW R 1200 C ABS Classic 1170 1997 ALL 45 KW(61 PS) Front  
BMW R 1200 C Classic 1170 1998 ALL 45 KW(61 PS) Front  
BMW R 1200 C ABS Classic 1170 1998 ALL 45 KW(61 PS) Front  
BMW R 850 C Classic 848 1998 EUROPE 25 KW(34 PS); 37 KW(50 PS) FRONT/LEFT  
BMW R 850 C ABS Classic 848 1998 EUROPE 25 KW(34 PS); 37 KW(50 PS) Front  
BMW R 1200 C Classic 1170 1999 ALL 45 KW(61 PS) Front  
BMW R 1200 C ABS Classic 1170 1999 ALL 45 KW(61 PS) Front  
BMW R 850 C Classic 848 1999 EUROPE 25 KW(34 PS); 37 KW(50 PS) FRONT/LEFT  
BMW R 850 C ABS Classic 848 1999 EUROPE 25 KW(34 PS); 37 KW(50 PS) Front  
BMW R 1200 C Classic 1170 2000 ALL 45 KW(61 PS) Front  
BMW R 1200 C ABS Classic 1170 2000 ALL 45 KW(61 PS) Front  
BMW R 850 C Classic 848 2000 EUROPE 25 KW(34 PS); 37 KW(50 PS) FRONT/LEFT  
BMW R 850 C ABS Classic 848 2000 EUROPE 25 KW(34 PS); 37 KW(50 PS) Front  
BMW R 1200 C Classic 1170 2001 ALL 45 KW(61 PS) Front  
BMW R 1200 C ABS Classic 1170 2001 ALL 45 KW(61 PS) Front  
BMW R 1200 C Classic 1170 2002 ALL 45 KW(61 PS) Front  
BMW R 1200 C ABS Classic 1170 2002 ALL 45 KW(61 PS) Front  
BMW R 1200 C Classic 1170 2003 ALL 45 KW(61 PS) Front  
BMW R 1200 C ABS Classic 1170 2003 ALL 45 KW(61 PS) Front  
BMW R 1200 C Classic 1170 2004 ALL 45 KW(61 PS) Front  
BMW R 1200 C ABS Classic 1170 2004 ALL 45 KW(61 PS) Front  
BMW R 1200 C Independent 1170 2000 ALL 45 KW(61 PS) Front  
BMW R 1200 C ABS Independent 1170 2000 ALL 45 KW(61 PS) Front  
BMW R 1200 C Independent 1170 2001 ALL 45 KW(61 PS) Front  
BMW R 1200 C ABS Independent 1170 2001 ALL 45 KW(61 PS) Front  
BMW R 1200 C Independent 1170 2002 ALL 45 KW(61 PS) Front  
BMW R 1200 C ABS Independent 1170 2002 ALL 45 KW(61 PS) Front  
BMW R 1200 C Independent 1170 2003 ALL 45 KW(61 PS) Front  
BMW R 1200 C ABS Independent 1170 2003 ALL 45 KW(61 PS) Front  
BMW R 1200 C Independent 1170 2004 ALL 45 KW(61 PS) Front  
BMW R 1200 C ABS Independent 1170 2004 ALL 45 KW(61 PS) Front  
BMW R 1200 C Montauk 1170 2004 ALL 45 KW(61 PS) Front  
BMW R 1200 C ABS Montauk 1170 2004 ALL 45 KW(61 PS) Front  
BMW R 1100 RS 1085 1993 EUROPE 66 KW(90 PS) FRONT/LEFT  
BMW R 1100 RS 1085 1994 ALL 66 KW(90 PS) FRONT/LEFT  
BMW R 1100 RS 1085 1995 ALL 66 KW(90 PS) FRONT/LEFT  
BMW R 1100 RS 1085 1996 ALL 66 KW(90 PS) FRONT/LEFT  
BMW K 1200 RS 1171 1997 ALL 72 KW(98 PS) Front  
BMW K 1200 RS 1171 1998 ALL 72 KW(98 PS) Front  
BMW K 1200 RS 1171 1999 ALL 72 KW(98 PS); 96 KW(130 PS) Front  
BMW K 1200 RS 1171 2000 ALL 72 KW(98 PS); 96 KW(130 PS) Front  
BMW R 1100 RT 1085 1996 ALL 66 KW(90 PS) Front  
BMW R 850 RT 848 1996 EUROPE 54 KW(73 PS) Front  
BMW R 1100 RT 1085 1997 ALL 66 KW(90 PS) Front  
BMW R 850 RT 848 1997 EUROPE 54 KW(73 PS) Front  
BMW R 1100 RT 1085 1998 ALL 66 KW(90 PS) Front  
BMW R 850 RT 848 1998 EUROPE 54 KW(73 PS) Front  
BMW R 1100 RT 1085 1999 ALL 66 KW(90 PS) Front  
BMW R 850 RT 848 1999 EUROPE 54 KW(73 PS) Front  
BMW R 1100 RT 1085 2000 ALL 66 KW(90 PS) Front  
BMW R 850 RT 848 2000 EUROPE 54 KW(73 PS) Front  
BMW R 1100 RT 1085 2001 ALL 66 KW(90 PS) Front  
BMW R 850 RT 848 2001 EUROPE 54 KW(73 PS) Front  
BMW R 850 RT 848 2001 EUROPE 54 KW(73 PS) Front  
BMW R 1100 S ABS 1085 1998 ALL 72 KW(98 PS) ABS Model Front  
BMW R 1100 S ABS 1085 1999 ALL 72 KW(98 PS) ABS Model Front

## **Dostępne opcje Tarcza hamulcowa EBC MD652 BMW R 1100 RS 850 RT K1**

» **Wybierz opcje z listy:** BRAKE ROTOR FIX RND MD652 - dostępny.

Watermark