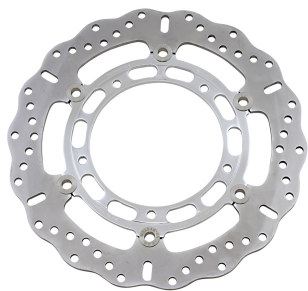


## Tarcza hamulcowa EBC MD2082CC YAMAHA XJ 6 Diversio



**Cena :**

**473,00 zł**

Nr katalogowy : **MD2082CC**

Producent : **EBC**

Stan magazynowy : **bardzo wysoki**

Średnia ocena :

Tarcza hamulcowa EBC MD2082CC YAMAHA XJ 6 Diversio ABS

COLOR/FINISH Polished

MATERIAL Billet Steel

MODEL Pro-Lite Series

OUTSIDE DIAMETER 298 mm (11-3/4")

SHAPE Contour

TYPE Two Piece (Floating)

UNITS Each

PRODUCT NAME Brake Rotor

MOUNTING POSITION Front Left

BRAKING SURFACE Drilled

BASE FINISH Polished

Firma EBC to jeden z największych europejskich producentów okładzin i tarcz hamulcowych.

Tarcze prosimy wymieniać parami, bowiem mogą one nieznacznie odbiegać wyglądem od oryginalnych.

Tarcze prosimy wymieniać w wyspecjalizowanych warsztatach motocyklowych!!!

Model Displacement Year Country Engine Info Position

YAMAHA MT-03 660 660 2006 EUROPE 25 KW(34 PS); 33 KW(45 PS) Front/Left/Right

YAMAHA MT-03 660 660 2007 EUROPE 25 KW(34 PS); 33 KW(45 PS) Front/Left/Right

YAMAHA MT-03 660 660 2008 EUROPE 25 KW(34 PS); 33 KW(45 PS) Front/Left/Right

YAMAHA MT-03 660 660 2009 EUROPE 25 KW(34 PS); 33 KW(45 PS) Front/Left/Right

YAMAHA MT-03 660 660 2010 EUROPE 25 KW(34 PS); 33 KW(45 PS) Front/Left/Right

YAMAHA MT-03 660 660 2011 EUROPE 25 KW(34 PS); 33 KW(45 PS) Front/Left/Right

YAMAHA MT-03 660 660 2012 EUROPE 25 KW(34 PS); 35 KW(48 PS) Front/Left/Right

YAMAHA XJ 6 600 2013 EUROPE 35 KW(48 PS); 57 KW(78 PS) Front

YAMAHA XJ 6 ABS 600 2013 EUROPE 35 KW(48 PS); 57 KW(78 PS) Front

YAMAHA XJ 6 600 2014 EUROPE 35 KW(48 PS); 57 KW(78 PS) Front

YAMAHA XJ 6 ABS 600 2014 EUROPE 35 KW(48 PS); 57 KW(78 PS) Front

YAMAHA XJ 6 600 2015 EUROPE 35 KW(48 PS); 57 KW(78 PS) Front

YAMAHA XJ 6 ABS 600 2015 EUROPE 35 KW(48 PS); 57 KW(78 PS) Front

YAMAHA XJ 6 Diversio 600 2009 EUROPE 25 KW(34 PS); 57 KW(78 PS) Front/Left/Right

YAMAHA XJ 6 ABS Diversio 600 2009 EUROPE 25 KW(34 PS); 57 KW(78 PS) Front/Left/Right

YAMAHA XJ 6 Diversio 600 2010 EUROPE 25 KW(34 PS); 57 KW(78 PS) Front/Left/Right

YAMAHA XJ 6 ABS Diversio 600 2010 EUROPE 25 KW(34 PS); 57 KW(78 PS) Front/Left/Right

YAMAHA XJ 6 Diversio 600 2011 EUROPE 25 KW(34 PS); 57 KW(78 PS) Front/Left/Right

YAMAHA XJ 6 ABS Diversio 600 2011 EUROPE 25 KW(34 PS); 57 KW(78 PS) Front/Left/Right

YAMAHA XJ 6 Diversio 600 2012 EUROPE 25 KW(34 PS); 57 KW(78 PS) Front/Left/Right

YAMAHA XJ 6 ABS Diversio 600 2012 EUROPE 25 KW(34 PS); 57 KW(78 PS) Front/Left/Right

YAMAHA XJ 6 Diversio 600 2013 EUROPE 35 KW(48 PS); 57 KW(78 PS) Front/Left/Right

YAMAHA XJ 6 ABS Diversio 600 2013 EUROPE 35 KW(48 PS); 57 KW(78 PS) Front/Left/Right

YAMAHA XJ 6 Diversio 600 2014 EUROPE 35 KW(48 PS); 57 KW(78 PS) Front/Left/Right

YAMAHA XJ 6 ABS Diversio 600 2014 EUROPE 35 KW(48 PS); 57 KW(78 PS) Front/Left/Right

YAMAHA XJ 6 Diversio 600 2015 EUROPE 35 KW(48 PS); 57 KW(78 PS) Front/Left/Right

YAMAHA XJ 6 ABS Diversio 600 2015 EUROPE 35 KW(48 PS); 57 KW(78 PS) Front/Left/Right

YAMAHA XJ 6 F ABS Diversio F 600 2010 EUROPE 25 KW(34 PS); 57 KW(78 PS) Front/Left/Right

YAMAHA XJ 6 F ABS Diversio F 600 2011 EUROPE 25 KW(34 PS); 57 KW(78 PS) Front/Left/Right

YAMAHA XJ 6 F ABS Diversio F 600 2012 EUROPE 25 KW(34 PS); 57 KW(78 PS) Front/Left/Right

YAMAHA XJ 6 F ABS Diversio F 600 2013 EUROPE 35 KW(48 PS); 57 KW(78 PS) Front/Left/Right

YAMAHA XJ 6 F ABS Diversio F 600 2014 EUROPE 35 KW(48 PS); 57 KW(78 PS) Front/Left/Right

YAMAHA XJ 6 F ABS Diversio F 600 2015 EUROPE 35 KW(48 PS); 57 KW(78 PS) Front/Left/Right

YAMAHA XJ 6 ABS SP 600 2013 EUROPE 35 KW(48 PS); 57 KW(78 PS) Front

YAMAHA XJ 6 ABS SP 600 2014 EUROPE 35 KW(48 PS); 57 KW(78 PS) Front